

C. Allison, M. Bramley, J. Serrano
University of St. Andrews, Scotland, KY16 9S

Learning Environments (DLEs) are multi-user
web-oriented applications and services

ation and have
reactive response

th multiple
s (e.g. scheduled
s peak loads and the
a slow response.

of the system is

The screenshot shows a financial data interface. At the top, there are filters for 'Prices as of:' with values '12', '1', and '1999'. Below this are dropdown menus for 'Sector:' (set to 'All sectors') and 'Type:' (set to 'All types'). A 'See Prices' button is located below the filters. The main part of the image is a table with two columns: 'Price (pence/Share)' and 'Security'. The table lists various securities and their corresponding prices.

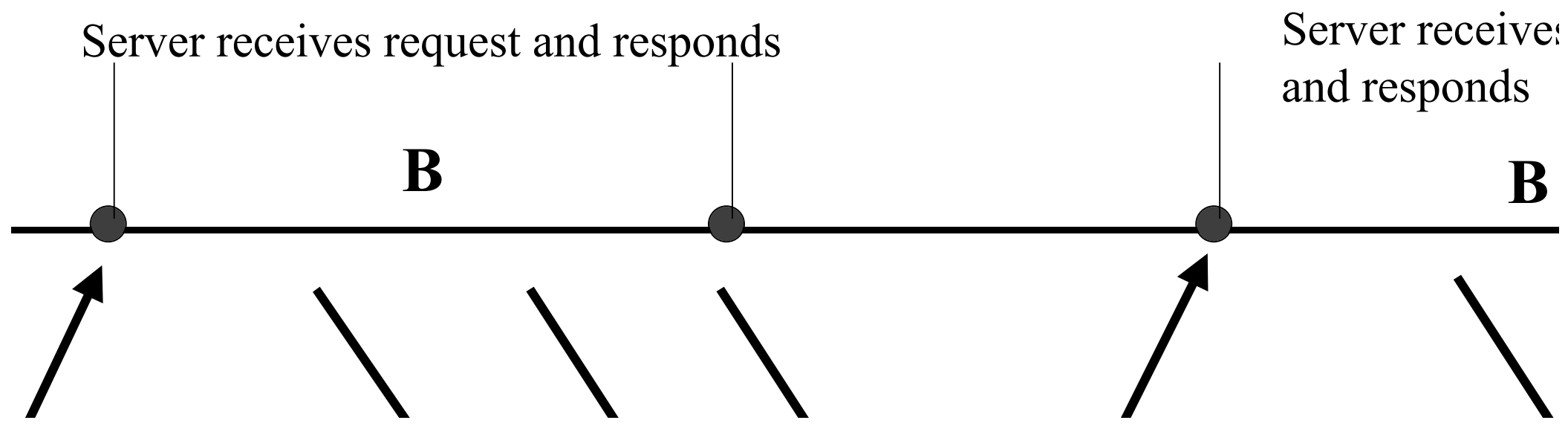
Price (pence/Share)	Security
1.00	10 GROUP
624.50	3I GROUP
624.50	3I GROUP
63.50	AB AIRLINES
1310.00	ABBEY NATION
50.50	ABERDEEN NEW T
175.00	ACCESS PLUS
1325.00	ADMIRAL
45.50	ADVAL GROUP
740.00	AEA TECHNOLO
98.25	AEGIS GROUP
99.00	AFA SYSTEMS
3.50	AFRICAN GOL
69.50	AGGREGATE INDUS
182.50	AGGREKO
27.50	AIRTECH
379.00	AIRTOURS
75.00	ALBEMARLE & B
28.00	ALZIM

be split in three phases:

TTP request generation (may involve DNS resolution)

request processing (may be static or script generated)

rendering time (parse time and display update)



stated share price

180KB

was responsible for
delay in most cases

is consuming no

sed on these

Timings in seconds
Figures in brackets
Figures in blue are

en proposed.

coherence server

uniform global view
all the nodes.

processing a single

- The following re
 - Request proce
 - Network delay
 - Coherence tin